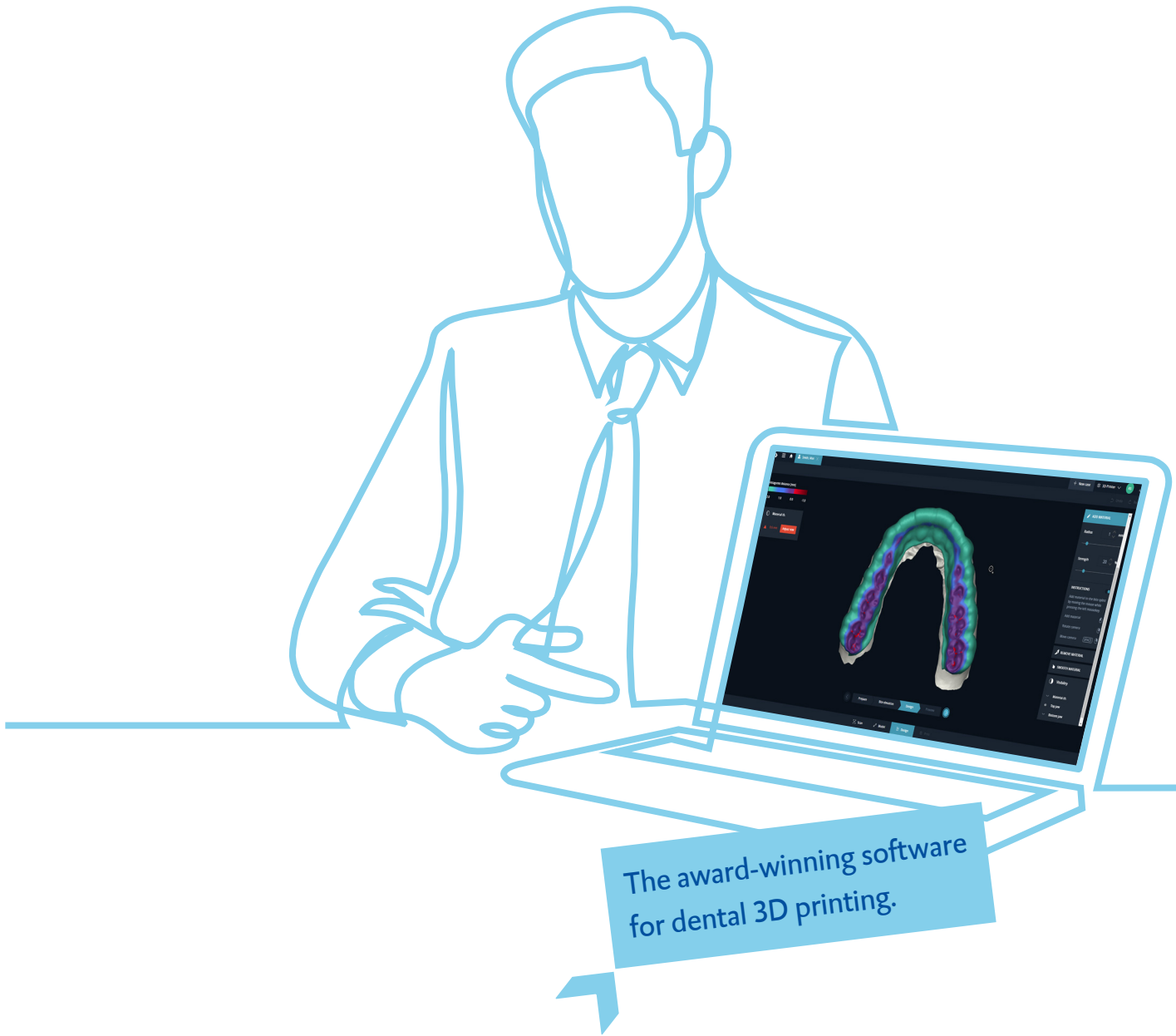




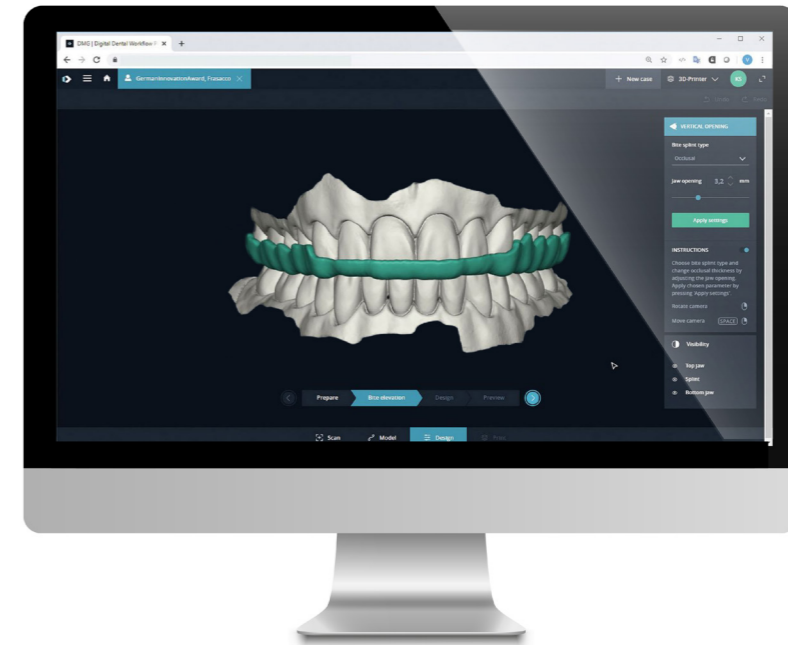
DentaMile
CONNECT



**Everything that
you need to know.**



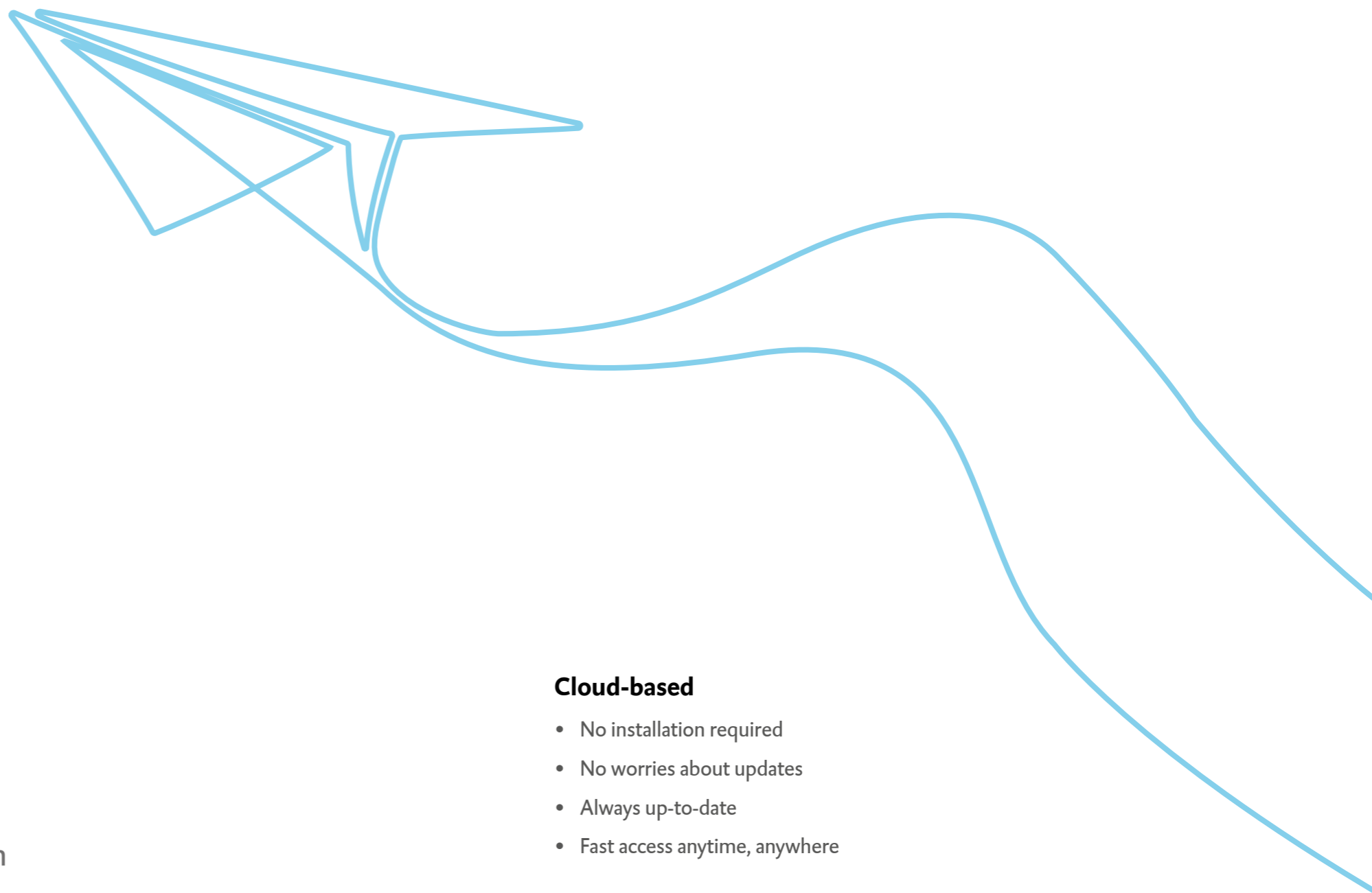
**Fast.
Intuitive.
Validated.**



DentaMile connect is your innovative software solution for the CAD/CAM production of splints, crowns and bridges.

Thanks to DentaMile connect, 3D printing is simplified to such a degree that the technology can be fully incorporated into everyday working environments.

**What else should you know about DentaMile connect?
Find out on the following pages.**



DentaMile connect is simple.

DentaMile connect – developed with users, tested by users, made for users. For efficient working procedures that meet everyday requirements.

What it offers: Plug-and-play.

Cloud-based

- No installation required
- No worries about updates
- Always up-to-date
- Fast access anytime, anywhere

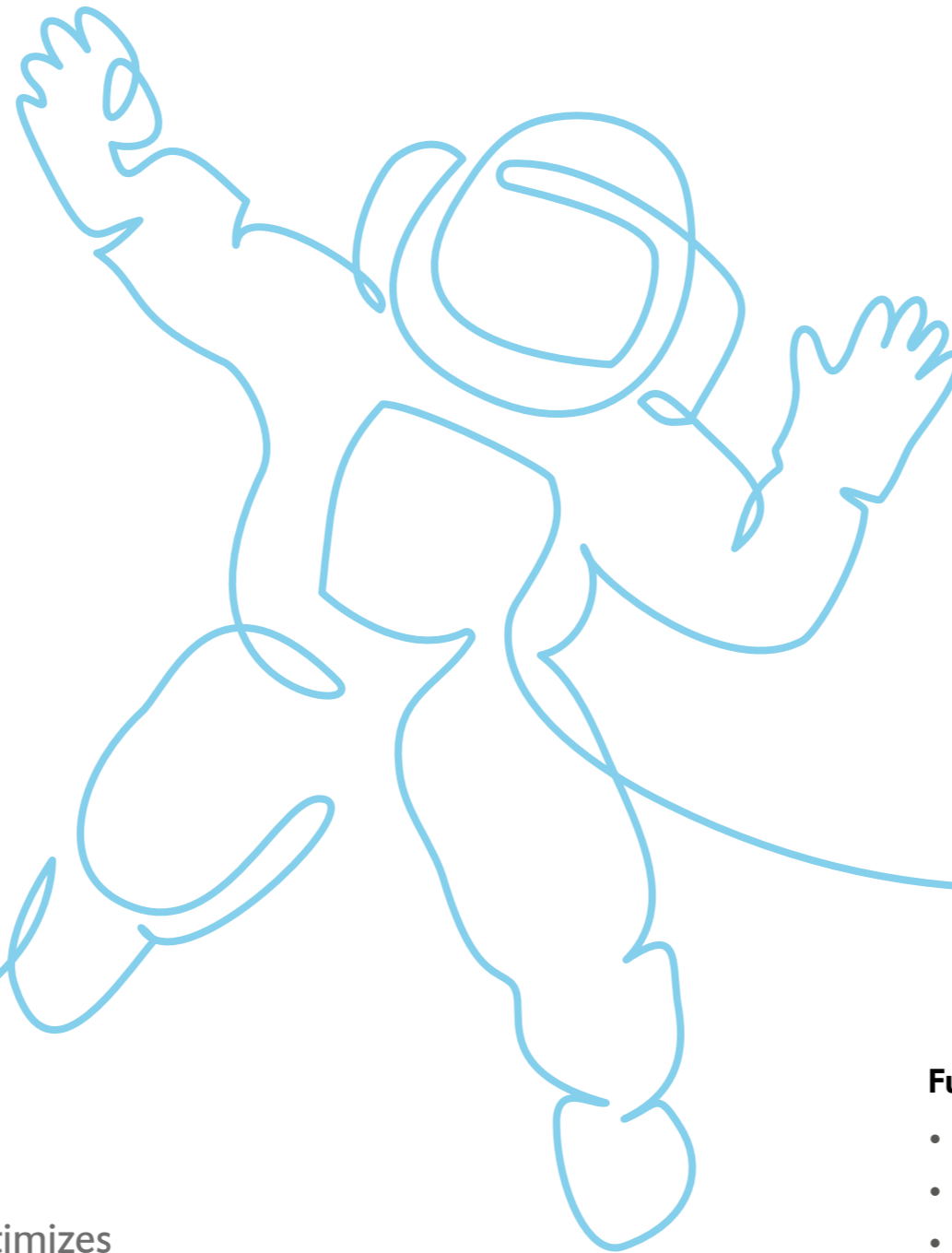
Easy to operate

- Easy, self-explanatory operation
- Intuitive user guidance without the need for extensive training
- Tested and optimized in collaboration with users (usability study conducted with eye-tracking)
- User tests have shown a steep learning curve

DentaMile connect is easy.

DentaMile connect systematically optimizes processes in your daily routine.

As simple as possible, as efficient as you wish.



Everyday efficiency

- The software harmoniously integrates into your daily routine, and helps to optimize your day.
- Helpful default settings, many steps automated
- Preparation of design proposals for occlusal splints
- Fully automatic nesting¹, slicing² and printing
- Once the printed item has been fully designed, it can be reproduced at any later date

Fully adjustable articulator

- Integrated virtual fully adjustable articulator
- Set to mean value, fully customizable as needed
- Individually adjustable settings for the best possible representation of the patient situation
- Reproduction of the patient-specific temporomandibular joint movements – the protrusion and laterotrusion, the Bennett angle and the freely adjustable anterior guide plate

¹Automatic positioning of the printed object on the building plate

²Transformation of a designed 3D-printed object into specific instructions for the printer



DentaMile connect

connects it all.

DentaMile connect ensures easy networking of all parties involved in the production process: People, devices and technologies.

Everything connected, without spatial or technical barriers.

Dental practice and laboratory

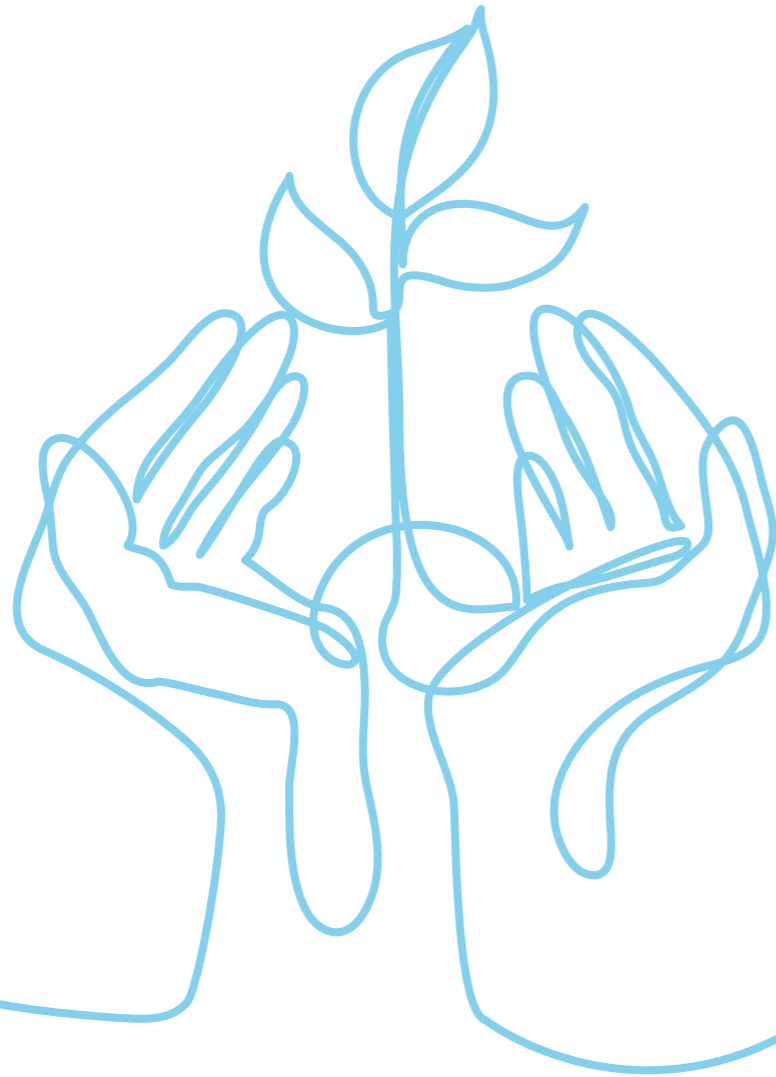
- Cloud-based: Physical distance is not an issue.
- Dentist, dental technician and current patient data are just a click away.
- Prompt communication
- Feedback can be obtained immediately.

Printers and peripherals

- »Smart Connectivity« for networking entire systems
- Easy import of scan files in open STL format
- Seamless integration of DMG 3D printers: 3Demax and 3Delite
- Seamless integration of DMG post-processing equipment: 3Decure and 3Dewash

Design, slicing and printing

- Control of all machining and processing operations with one software
- Uniform software interface for seamless technology integration
- Transfer, archive and encrypt patient data using the latest cloud technology from Microsoft Azure
- Integrated slicing without system/technology changes
- CAD design and manufacturing using the 3D printer, all at a glance



DentaMile connect is secure.

DentaMile connect forms the basis for securing and validating the workflow in medical device manufacturing. Errors are minimized and processes are made MDR-compliant and traceable.

Data security

- Encryption of patient data with the latest cloud technology from Microsoft Azure
- Data protection and the highest level of data security are guaranteed
- Consideration of regional data protection requirements (Microsoft Server, servers in Europe)
- Automatic interim backup storage of designs

Application security

- DentaMile connect minimizes sources of error and opens up new functions without any additional effort.
- The software guides users through the manufacturing process and takes into account the interactions between the materials and the manufacturing method.
- In combination with DMG DentaMile hardware and resins: assurance of a biocompatible, validated medical device
- End product complies with legal requirements and meets individual patient needs.
- Additional safeguards provided by competent personal service (by telephone, online or on-site)

Logging

- All processing steps are digitally displayed and documented.
- Consistent logging of workflows

MDR-compliant validated workflow

- Standardized validated manufacturing
- Consideration of the requirements for dental medical devices
- Compliance with MDR standards is made possible

DentaMile connect is award-winning.

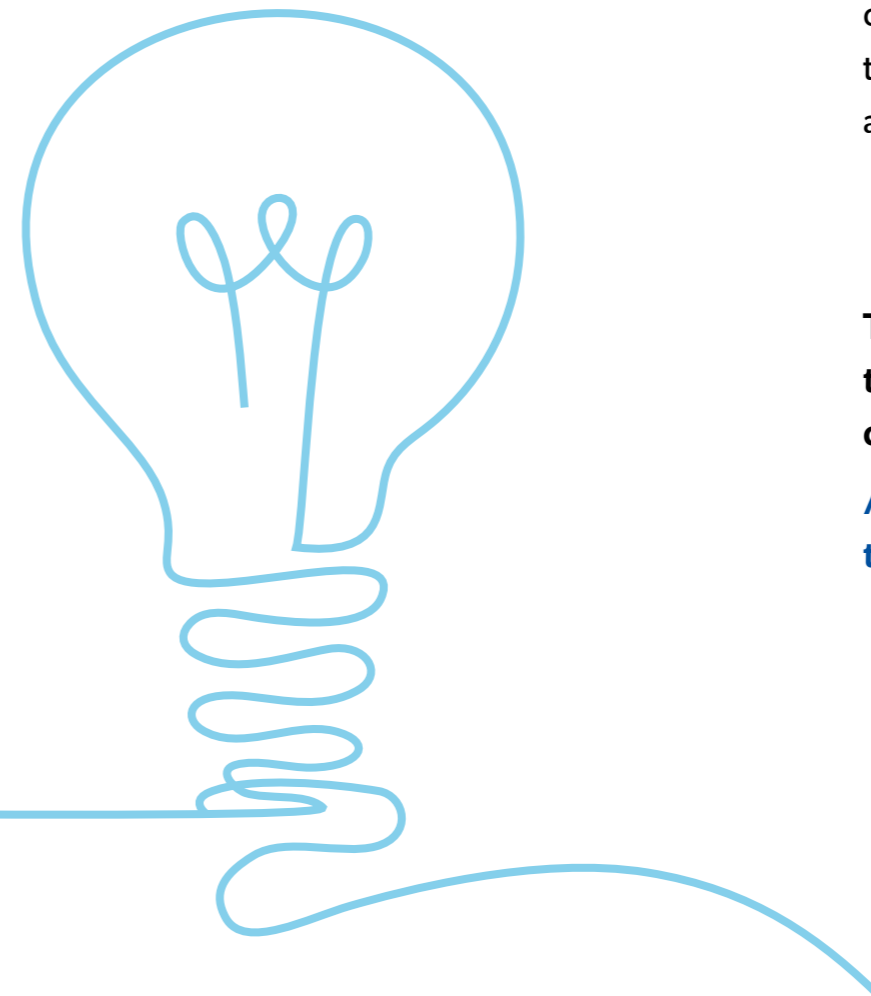
The DentaMile connect software was awarded the 2020 German Innovation Award. Declared »Winner Excellence in Business to Business« in the »Medical Technologies« category.



The annual German Innovation Award recognizes products and solutions that come from various sectors and that stand out from previous solutions in terms of user friendliness and added value.

That's everything you need to know about DentaMile connect.

And now: The best thing to do is to just get started.






That's all
from our side.

There is nothing more
that is needed.

Really.
www.dentamile.com



We are happy to assist you with a personal consultation or supervised testing of the software: There are various ways to contact the DMG Service Center Digital:

Phone:

0800-84 00 66 6 (free of charge if from German landlines)
+49 40 84 00 66 66 (fee-based, in English)

Email:

supportdigital@dmg-dental.com

Contact form on the internet:

www.dmg-dental.com/contact-support-digital



DentaMile
CONNECT

DMG

Digital Enterprises SE

Elbgaustraße 248 22547 Hamburg Germany

Fon: +49.(0)40.84006-0 Fax: +49.(0)40.84006-222

info@dmg-dental.com www.dmg-dental.com

www.facebook.com/dmgdental

